

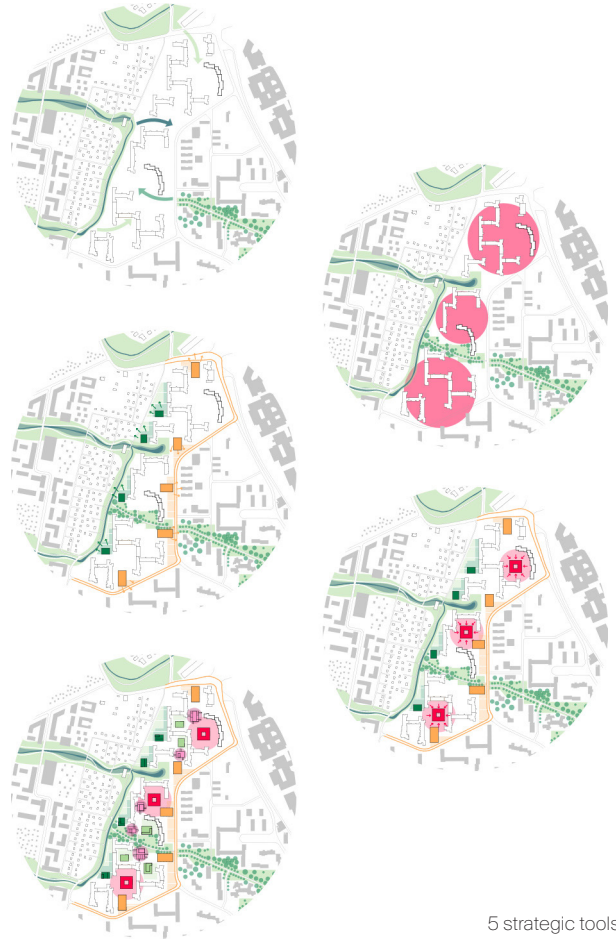
From Bergedorf to BergeDörfen

multiple assignment HOUSING - what else? **location** Hamburg, Deutschland **size** 8,3 ha **client** Gemeinnützige Baugenossenschaft Bergedorf-Bille eG **service** urban and architectural concept **status** idea **team** Oliver Seidel, Kirstin Bartels, Tim Mohr, Carlotta Nilius, Emma Römer

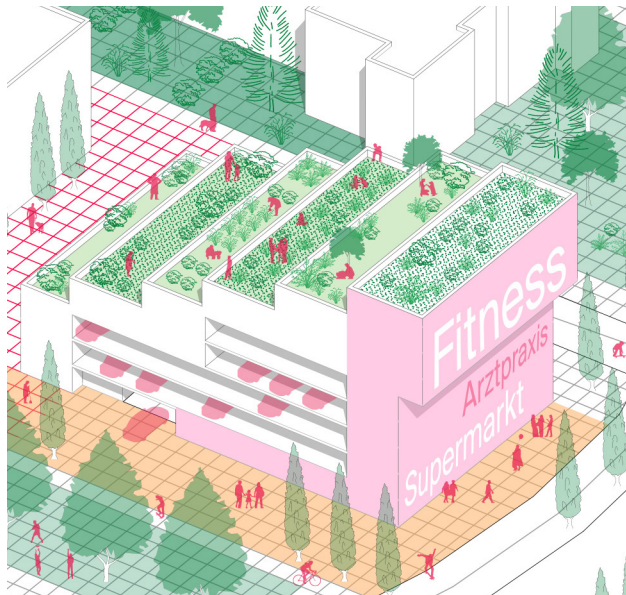
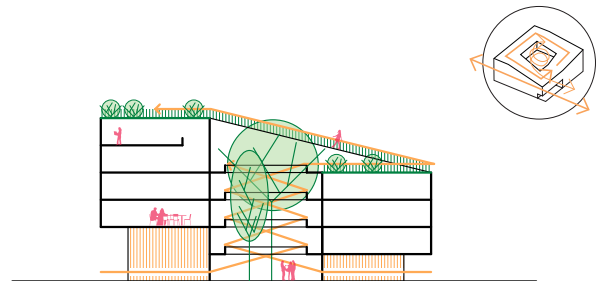
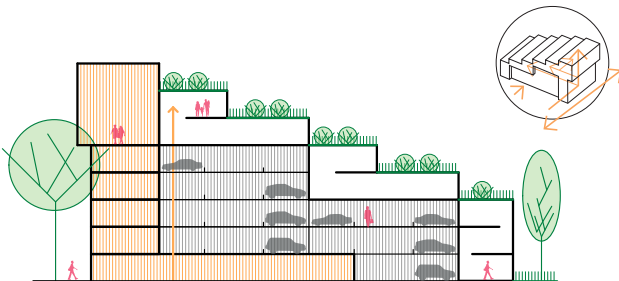
Bergedorf-West will take centre stage of urban development due to its immediate proximity to Oberbillwerder. With around 1500 newly renovated affordable apartments and large undefined spaces in between, the housing stock forms a stable basis for experimenting with new forms of living. The aim is to strengthen the neighborhood and provide opportunities for participation, to create a living and open space for the urbanophile community and to add further functions to living.

The area will be further developed using 5 strategic tools:
 1) structuring, 2) clustering, 3) addressing, 4) centralize, 5) enrich.

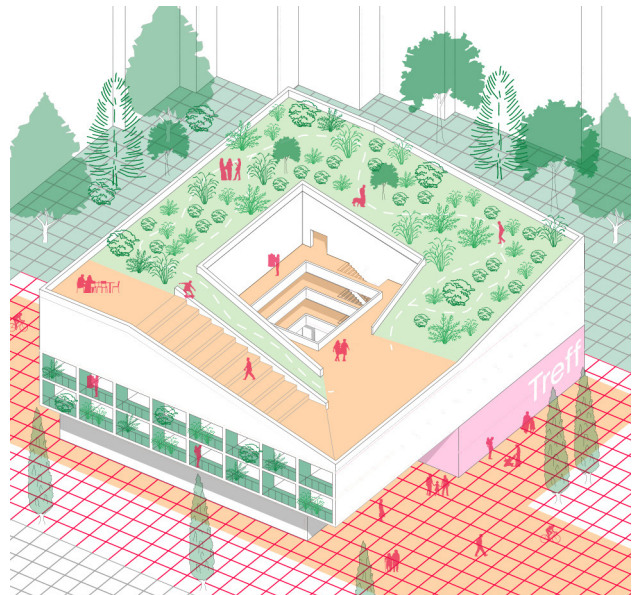
Four earth-related hybrid typologies enliven the public space and link "Old" with "New". Highly diversified and flexible residential floor plans, partly left as blanks, are combined with various open spaces such as balconies, loggias, roof terraces and community gardens, allowing individual living constellations. Additional functions like open offices, medical practices, a fitness studio and other small businesses as well as semi public rooftop gardens bring the public into the upper floors of the new buildings.



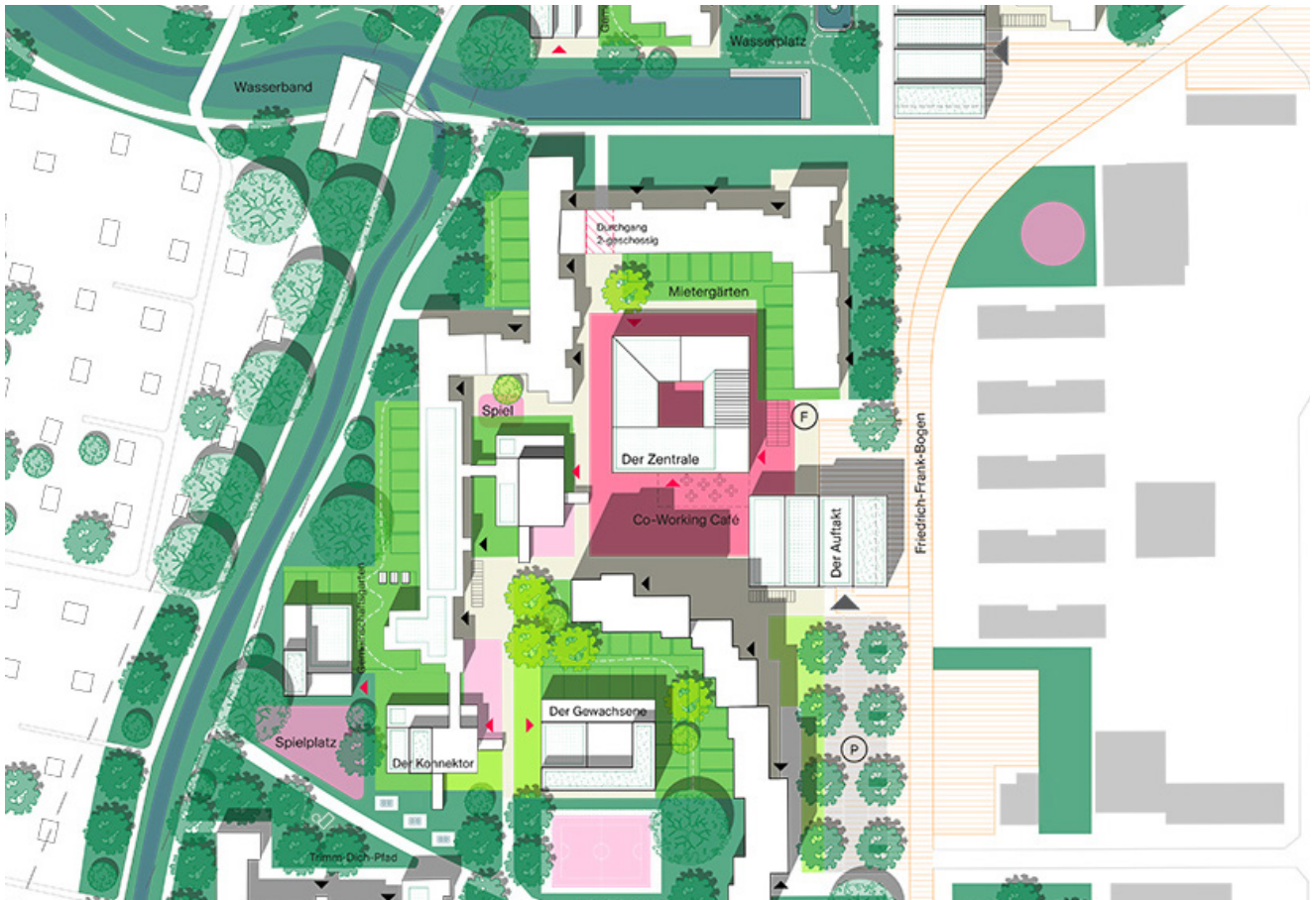
5 strategic tools



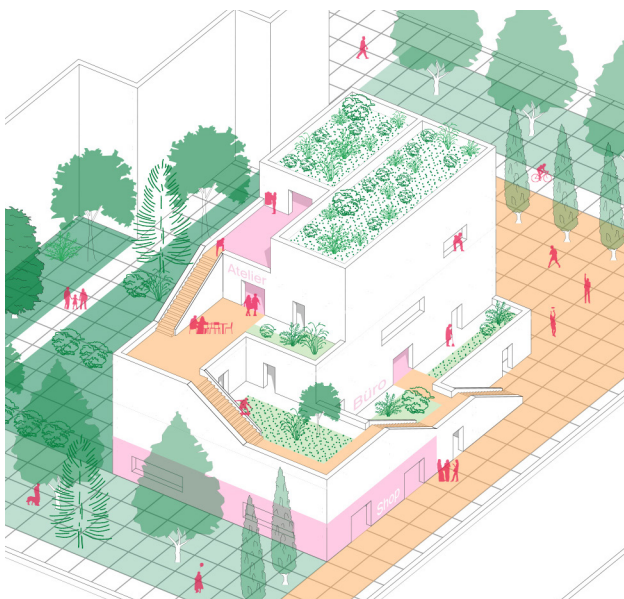
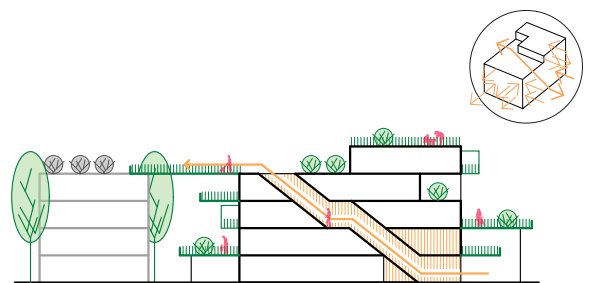
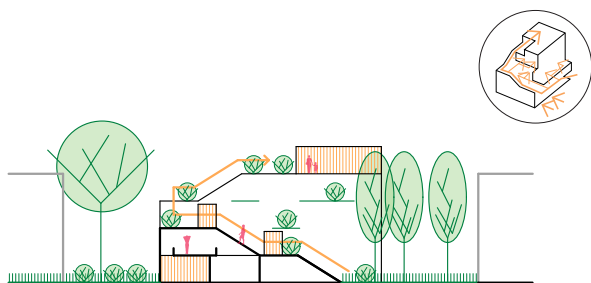
the beginner - lofts, terrace apartments, mini biotopes, retail and parking



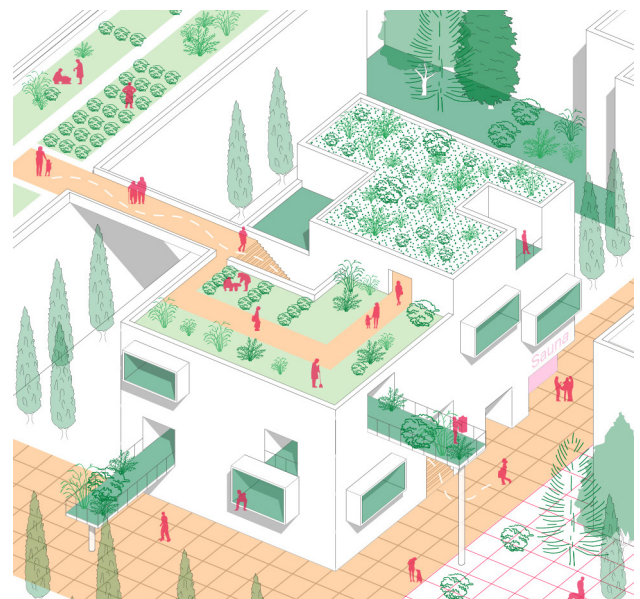
the centre - mini apartments, roofscape, community centre



Masterplan BergeDörfer - individual neighbourhood within nature



the grown one - stacked development houses, rooftop gardens, studios



the connector - maisonettes, urban farming, common rooms