

SPATIAL VISION FREIBURG

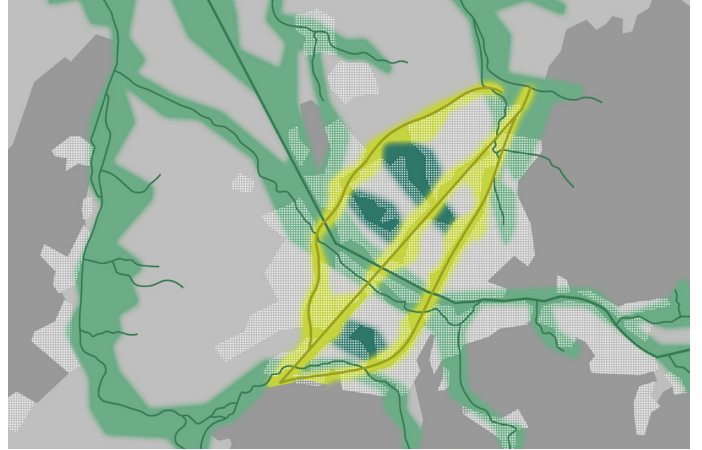
assignment spatial development concept until 2030 **location** Freiburg im Breisgau, Germany **size** 153 km² **client** City of Freiburg
services structural analysis (GIS based), spatial strategies, density model, spatial guidelines, masterplan; participation process **Status** ongoing since 2014 **team** Oliver Seidel, Verena Brehm, Sanna Richter, Tim Mohr, Lisa Iglseider **cooperation** freiwurf landscape architectures, Stein+Schultz urban regional and landscape planners

Freiburg is a growing city where more and more people want to live. How can the city continue to be developed in a sustainable way? The Perspektivplan elaborates spatial development options for the City of Freiburg in the next 10 to 15 years. In the course of designing, built-up areas and open spaces are conceived and developed together. Based on a differentiated (GIS)-structure analysis, so far undetected potentials are made visible, development strategies are pointed out and by means of scenarios a future spatial image with a complementary structure plan is generated. The project has been developed in a cooperative process with stakeholders, the municipality, politics and the public.

www.perspektivplan-freiburg.de



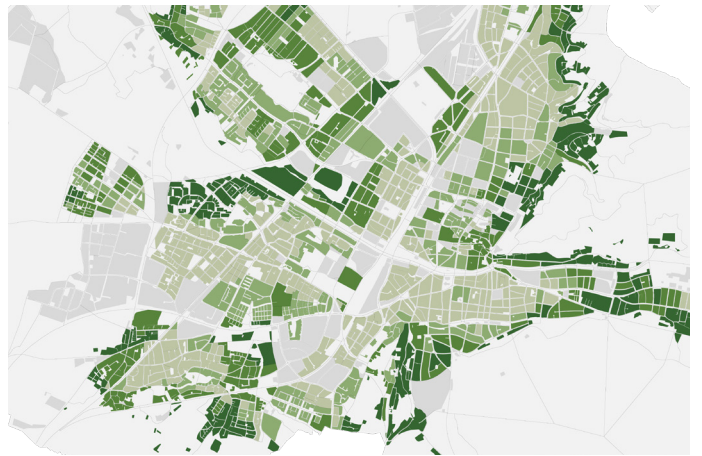
Model



Spatial guidelines: The Freiburg 3x3



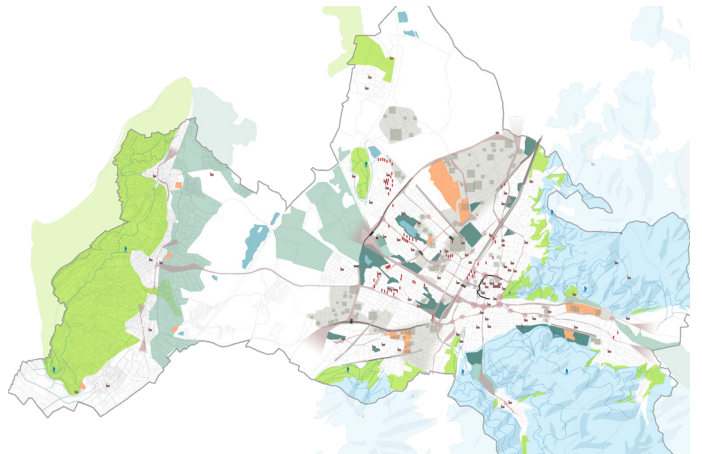
Density of constructions



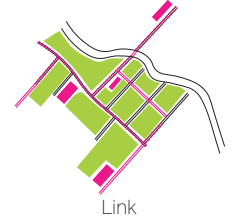
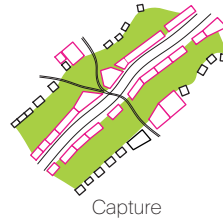
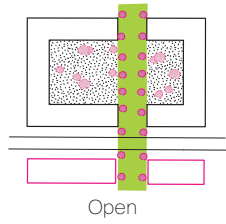
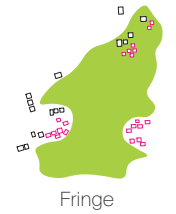
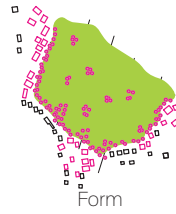
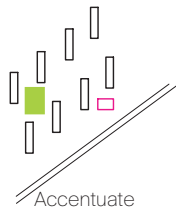
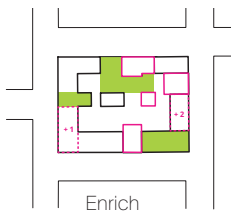
Supply of public space



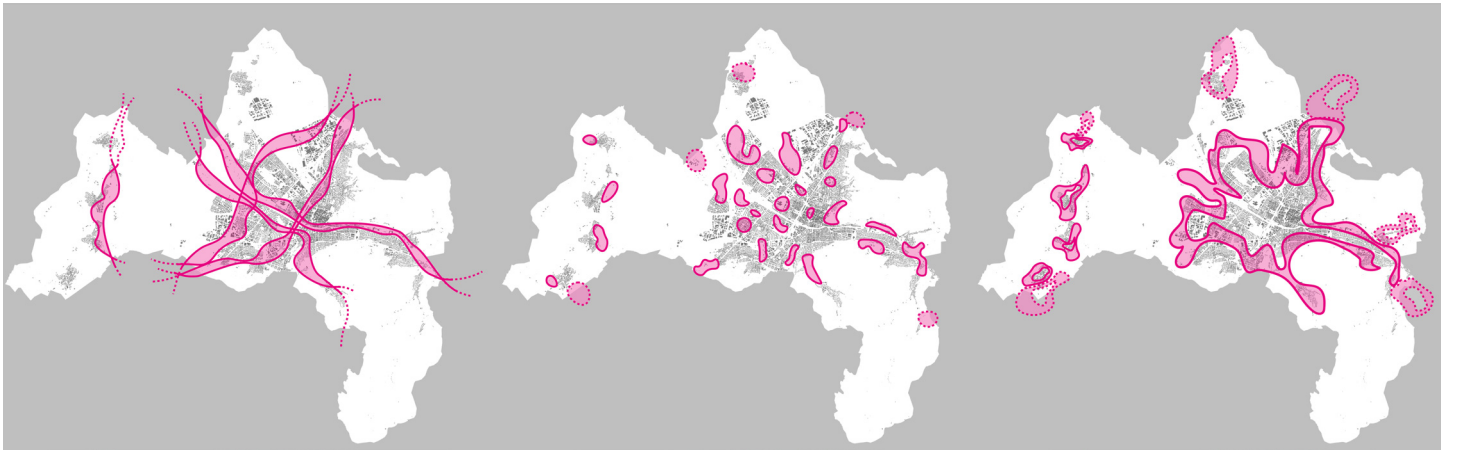
Potential: interspaces



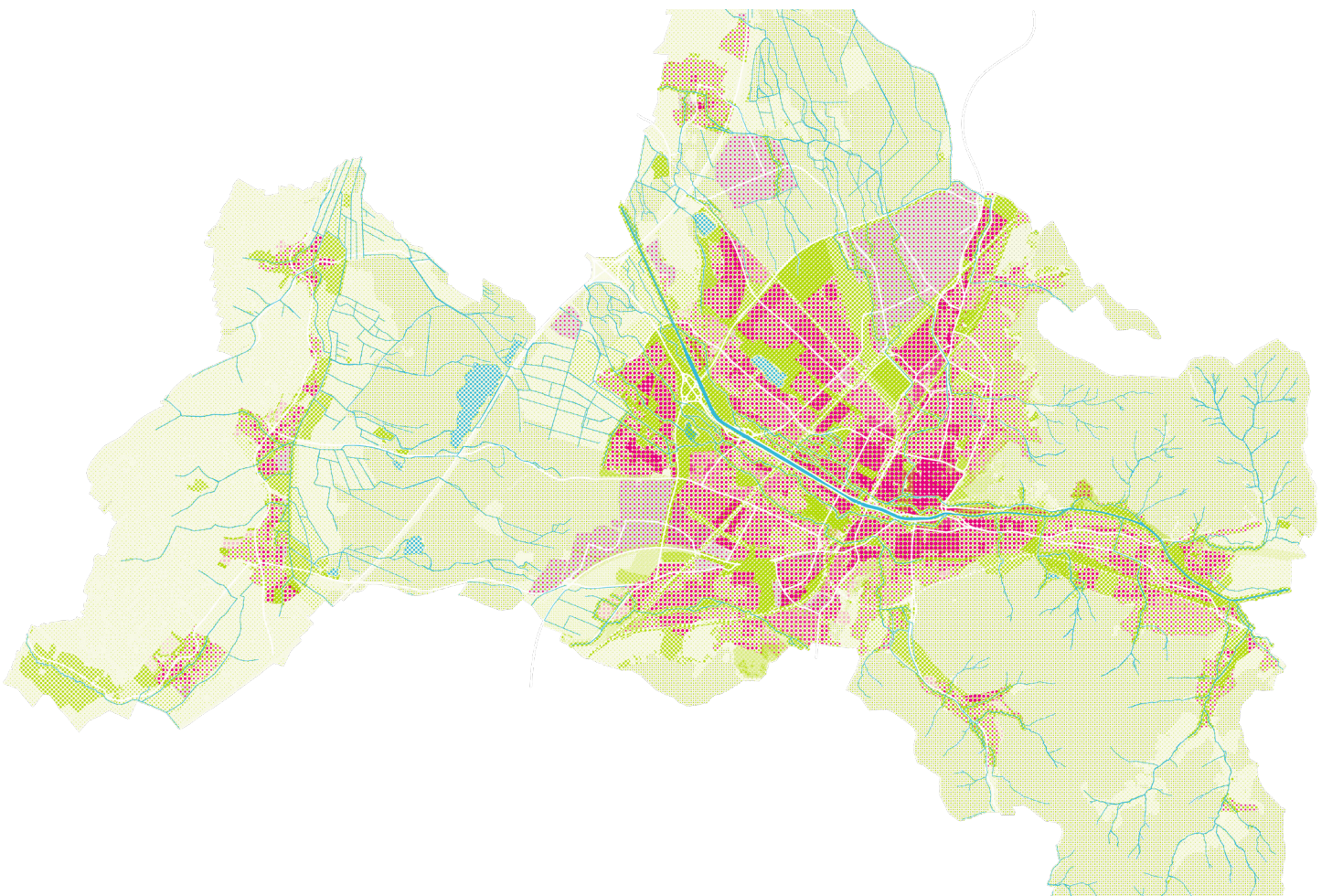
Potential: sceneries



Strategic tools



Three scenarios: "Strong Connection", "Identity giving Parks", "Vivid Borders"



Structure plan