

# WETLAND

## SPONGE CITY HEFEI

**assignment** Hefei sample areas **location** Hefei / Anhui, China **size** 6 ha **client** City of Hefei **services** landscape design **status** under construction **team** Oliver Seidel, Martin Sobota, Tim Mohr, Enisa Selmanaj, Lydia Oehlwein, Kelai Yu, Anna Finn, Jakob Fielers **cooperation** Wasser Hannover GmbH, Joost Emmerik

The Wetland Park in the city park of the sponge city of Hefei creates an adventure space from the infrastructure needed to prevent flooding and to clean the drain water. The green-blue complexes will become visible and tangible core elements of the newly emerging city.

The wet biotope is varied. A variety of visual relationships mediate between the city and the park landscape. Flora and fauna are within reach over the circular footbridges in the middle of the city and, like the various terrace levels, invite you to linger and stroll. Small islands serve as vantage points from which the dynamic water levels can be observed particularly well. In addition, they provide important habitats for various animals and plants and thus promote biodiversity in Hefei.

A sundeck is planned in the east of the wetland. Urbanity and publicity are lived under the wooden roof. Various levels descend towards the wet biotope, creating a variety of places with different qualities that differ in size, shape and activity.

Pre-cleaned water from the northern Floodplain Park is further cleaned by plants close to the water before it is fed into the adjacent reservoir. In addition, the wetland biotope improves the city's sponge function: the absorption capacity of the wetland prevents too much water from being discharged directly into the lake, a concept that counteracts potential flooding scenarios. The transition to the lake is fluid while floating islands mediate between wetland and lake.



location in the city park



In times of good weather, the several stairs invite to play, stroll and sit.

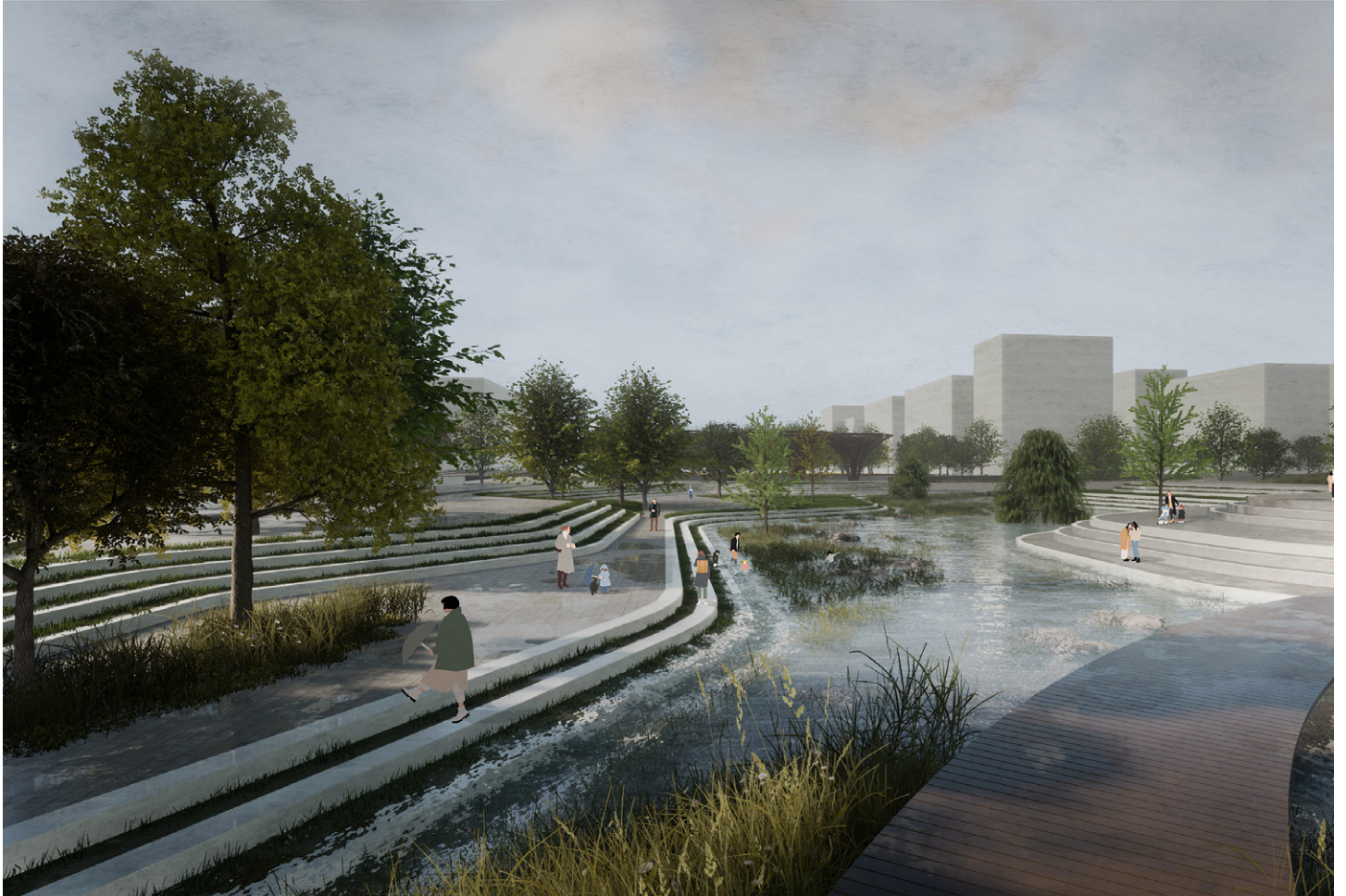




In times of good weather, circular footbridges invite to linger & stroll.



In times of bad weather, the elevated circular footpaths are still accessible.



In times of bad weather, the stairs function as a retention basin.