

JUGENDHERBERGE FOR FUTURE

DJH LOCHEN

assignment concept design for a flagship project for sustainable, circular hostel renovations **location** Balingen, Germany **size** 2080 sqm GFA **client** Deutsches Jugendherbergswerk (DJH) Baden-Württemberg **services** basic evaluation, concept design **status** idea, 2024 **team** Martin Sobota, Piotr Kalbarczyk, Ralf Schramm, Genesis Redd, Anneke Sandow, Valerie Heesakkers, Petre Simonescu, Edoardo Fachinelli, Nele Leseman **cooperation** CEWI-cooperation (WWF, Bundesministerium für Umwelt (BMUV); Triodos Bank & others

As part of the CEWI-cooperation, Cityförster is developing an implementation concept that shows how the sustainable and careful renovation of real estate can be implemented in the DJH Landesverband Baden-Württemberg e.V.

The mission for DJH Lochen is to be a flagship project for circularity, sustainability and sufficiency. Following the didactic focus of DJH Baden-Württemberg, the hostel should offer its guests an educational experience for sustainable awareness. These themes are also represented in the architectural concept.

The theme of sufficiency has guided the hostel to develop a summer house for the peak season, by transforming the old garage. This summer house provides guest rooms in the warm months, making a low-tech building without heating or cooling possible. Upon arrival, the summer house is the eyecatcher of the circularity concept.

A minimal renovation is sufficient to meet today's requirements. Building components are harvested on site or in the region and repurposed. Other applied materials are recycled rubber, concrete and wood.

The beautiful location of DJH Lochen provides an inspiring natural environment. The outdoor facilities are upgraded, and new functionalities are added to extend the possibilities for outdoor activities. The multifunctional outdoor spaces contribute to the sustainable outdoor experience of DJH Lochen.



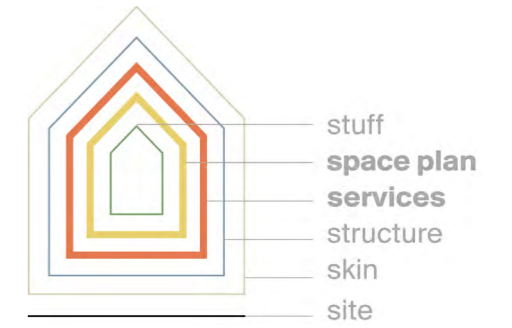
Youth hostel existing building



View from the terrace



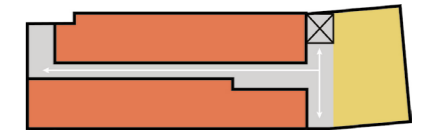
The new masterplan activates the terrain and creates multifunctional spaces



Existing



New



The renovation focusses on the Space Plan and Services of the building. The circulation is reconfigured to fit in an elevator.



Arrival at the youth hostel. The summer house is the eyecatcher of the circular concept, with recycled wood, window frames and construction components



Lively atrium in the new summer house